

THE  
SANTA FE  
OPERA



2021  
JULY 10 – AUGUST 27

## THE MARRIAGE OF FIGARO

Wolfgang Amadeus Mozart

WORLD PREMIERE

## THE LORD OF CRIES

Music: John Corigliano  
Libretto: Mark Adamo

## EUGENE ONEGIN

Pyotr Ilyich Tchaikovsky

## A MIDSUMMER NIGHT'S DREAM

Benjamin Britten

# A Message from the General Director



Dear Friends,

We live to bring you great performances, to provide an escape into a world of magic, romance and comedy. After what we have lived through this past year, live opera's ability to transport us to these realms of hope is needed more than ever before. It is with hope in mind that we are tirelessly planning for a 2021 Season at the Santa Fe Opera.

Our plans for the 2021 Season are being made in close collaboration with government officials as well as experts in epidemiology and public health. It is my promise to all of you – our patrons, artists, musicians, staff and the Santa Fe community – that we are taking every possible precaution to protect your health. In our return to the stage, our most significant safety feature is one that we have taken pride in since the beginning, and that is the outdoor nature of the magnificent Crosby Theatre. While it can sometimes be chilly, and even let in a few rain drops, our ability to present world-class opera outside in the cool desert air is one of our greatest assets.

When you arrive at the Santa Fe Opera next summer, many things will look different. In all front-of-house operations, we will be taking every possible precaution to mitigate transmission of the virus. In this new reality, we must all work together to limit exposure to COVID-19, and I thank you for helping us to once again make opera a joyous part of the summer.

The Santa Fe Opera is fortunate to attract the greatest opera talent from around the country and the world to perform on our stage. I am thrilled to announce that we are partnering with CHRISTUS St. Vincent hospital to carefully develop a comprehensive strategy that will protect the well-being of these artists, the rest of our staff and the wider Santa Fe community.

This is an active process and we will continue to update you as we approach next summer, but I assure you that these policies and procedures are being implemented in service to our mission. The Santa Fe Opera has been working to bring this incredible art form to our audience since 1957, and we continue our work to expand opera's reach to new and diverse audiences.

The 2021 Season will be nothing less than a tribute to our unwavering optimism for the future of opera and the delight it can bring to viewers of all ages and backgrounds. Our Box Office has been working diligently to create a ticket sales plan that will evolve alongside the most current public health directives. Our primary goal is safety and, as always, we are committed to providing you with the best possible experience.

It will be a privilege to bring opera back to the mountains of northern New Mexico. Until then, my thoughts are with you and your loved ones. We hold great optimism for what 2021 will bring and we look forward to welcoming you back to the opera, in person, as we move toward a safe and hopeful future. Thank you and see you soon at the Santa Fe Opera.

With gratitude,

Robert K. Meya  
General Director



# The Marriage of Figaro

MUSIC  
Wolfgang Amadeus Mozart

LIBRETTO  
Lorenzo Da Ponte

8:30 PM  
JULY 10, 14, 23

8 PM  
AUGUST 3, 10, 14, 18, 21, 24, 27



## STAND BACK AND LET LOVE CONQUER

What's a bride to do to stop the unwanted advances of her employer? She teams up with his wife to teach him a lesson in fidelity.

Laurent Pelly's new production of this timeless classic spins this 24-hour tale like clockwork and reveals that love, especially when paired with wit, can conquer all.

### Principal Artists

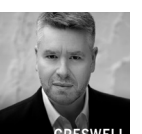
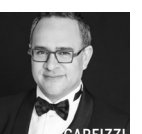
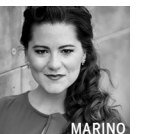
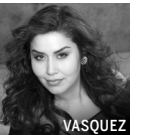
Figaro	Ashley Riches**^
Susanna	Ying Fang*
Countess Almaviva	Vanessa Vasquez
Count Almaviva	Samuel Dale Johnson**^
Cherubino	Megan Marino
Marcellina	Michaela Martens
Basilio	Brenton Ryan
Bartolo	Patrick Carfizzi
Antonio	James Creswell*

### Creative Team

Conductor	Harry Bicket
Director & Costume Design	Laurent Pelly
Scenic Design	Chantal Thomas
Lighting Design	Duane Schuler
Chorus Master	Susanne Sheston

\* Debut Artist  
^ US Debut

Production support generously provided by  
James R. Seitz, Jr.





# The Lord of Cries

WORLD PREMIERE

MUSIC  
John Corigliano

LIBRETTO  
Mark Adamo

8:30 PM  
JULY 17, 21, 30

8 PM  
AUGUST 5, 11, 17



## YOU HAVE BEEN ASKED ONCE

He lands tonight, on his ship of ghosts, under the scudding skies. His high, thin voice – Ecstasy and ruin! Dracul, Dracula: the Lord of Cries! Deny him not his place.

John Corigliano and Mark Adamo's exciting new work is a juxtaposition of Bram Stoker's *Dracula* and *The Bacchae* by Euripides. The result is a searing account that points to the monster inside ourselves, not society. This world premiere production is led by director James Darrah who has created a dream-like realm that will frighten and excite.

### Principal Artists

Dionysus	Anthony Roth Costanzo*
Lucy Harker	Susanna Phillips
Jon Harker	David Portillo*
John Seward	Jarrett Ott
Van Helsing	Matt Boehler*
Correspondent	Kevin Burdette

### Creative Team

Conductor	Johannes Debus
Director	James Darrah*
Scenic Design	Adam Rigg*
Costume Design	Chrisi Karvonides-Dushenko*
Lighting Design	Pablo Santiago*
Projection Design	Adam Larsen*
Chorus Master	Susanne Sheston

\* Debut Artist

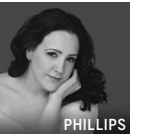
Production support generously provided by:  
The Wyncote Foundation  
as recommended by Frederick R. Haas & Rafael Gomez  
David A. Kaplan & Glenn A. Ostergaard, Brautigam-Kaplan Foundation  
Robert L. Turner

Additional artistic support provided by:  
Drs. Susan & Dennis Carlyle  
The Carl & Marilyn Thoma Foundation

The performances of Anthony Roth Costanzo are supported by  
Gene & Jean Stark.



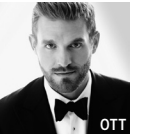
COSTANZO



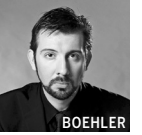
PHILLIPS



PORTILLO



OTT



BOEHLER



BURDETTE



# Eugene Onegin

MUSIC  
Pyotr Ilyich Tchaikovsky

LIBRETTO  
Konstantin Shilovsky,  
Pyotr Ilyich Tchaikovsky,  
after Alexander Pushkin

8:30 PM  
JULY 24, 28

8 PM  
AUGUST 6, 12, 20, 26

## BURIED DESIRES AND DREAMS CORRODED WITH RUST

Potent emotion and sweeping drama take the stage as Tatyana's confession of love is rejected by Onegin who, a little too late, realizes his mistake.

Tchaikovsky's lush melodies create the intense drama of one of Pushkin's greatest stories and Alessandro Talevi's new production centers on the opera's nostalgic theme of what was, what was not and what could have been.

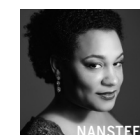
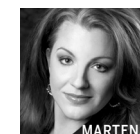
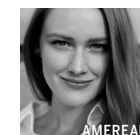
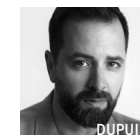
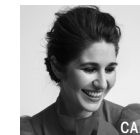
### Principal Artists

Tatyana	Nicole Car*
Eugene Onegin	Etienne Dupuis*
Lensky	Dovlet Nurgeldiyev*^
Olga	Avery Amereau*
Larina	Michaela Martens
Filippjevna	Deborah Nansteel
Prince Gremin	James Creswell*

### Creative Team

Conductor	Nicholas Carter
Director	Alessandro Talevi*
Scenic & Costume Design	Gary McCann
Lighting Design	Matt Haskins*
Chorus Master	Susanne Sheston

\* Debut Artist  
^ US Debut



Production support generously provided by  
Robert & Ellen Vladem.

The performances of Nicole Car and Etienne Dupuis  
are supported by

The Joseph and Robert Cornell  
Memorial Foundation.



# A Midsummer Night's Dream

## MUSIC

Benjamin Britten

## LIBRETTO

Benjamin Britten and Peter Pears,  
after Shakespeare

8:30 PM  
JULY 31

8 PM  
AUGUST 4, 13, 19, 25



## OUT OF THIS WOOD DO NOT DESIRE TO GO

Mismatched lovers, a group of actors, fairies and their King and Queen are in the forest. Paths cross, so do lovers and, in the end, all's well that ends well.

Netia Jones leads the Santa Fe Opera premiere of this beloved work. With an eye toward the original Shakespeare and leaning upon traditional "stage magic," this is a production not to be missed!

### Principal Artists

Tytania	Erin Morley
Oberon	Iestyn Davies*
Flute	Brenton Ryan
Bottom	Ashley Riches*^
Puck	Reed Luplau
Snout	Matthew Grills*
Starveling	Patrick Carfizzi
Quince	Kevin Burdette

### Creative Team

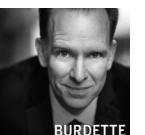
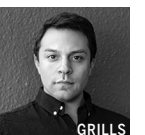
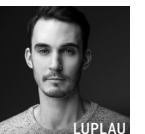
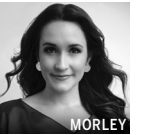
Conductor	Harry Bicket
Director,	
Scenic & Costume Design	Netia Jones*
Lighting Design	D.M. Wood*
Choreographer	Reed Luplau
Chorus Master	Susanne Sheston

\* Debut Artist

^ US Debut

Production support generously provided by  
Avenir Foundation, Inc.

The engagement of Netia Jones is supported by  
The Marineau Family Foundation.





# Angel Blue in Concert

An Exquisite Night of Music

---

8 PM  
AUGUST 7



Join us for an evening of exquisite music featuring Angel Blue in her Santa Fe Opera debut with the Santa Fe Opera Orchestra and others led by conductor John Fiore.

# Apprentice Scenes Nights

The Next Generation of Opera – Center Stage

---

8 PM  
AUGUST 15 & 22



The opera's singing and technical apprentices take the mainstage spotlight for two unique evenings of staged scenes. These evenings are fun-filled "sampler boxes" of operatic styles. They are a great introduction to opera and a great value for families to enjoy an evening out. Our apprentice programs have launched numerous distinguished careers and these two evenings are the perfect opportunity to experience the future of opera – onstage now.

# Health and Safety in our COVID-19 World

The health and safety of our audience, staff and artists are of the highest priority as we plan for our 2021 Season. Our staff are hard at work building the foundation of our health and safety protocols and we want to share our process and current plans with you.

We have created a Reopening Advisory Group that includes health officials, board members and staff who are following the latest science and recommendations for how best to protect you from COVID-19. We are in close communication with our state and local authorities to ensure we are in compliance with official policies. COVID-19 safety practices are developing and improving every day. As we get closer to the opening of our 2021 Season, we will shift and better define our plans according to the latest medical advice.

For now, we would like to share what we already have underway.

- Ticket orders are accepted via phone or online. No walk-up orders will be taken by the Box Office.
- Tickets will be delivered as print-at-home or mobile tickets only.
- Prior to arriving at the opera, we are recommending our patrons self-screen against the CDC's Coronavirus Self-Checker located on our [website](#).
- Audience members will be asked to wear facemasks at all times.
- Acrylic shields will be placed between staff and audience members at points of contact.
- Special cleaning equipment and supplies will be used to sanitize our bathrooms, elevator and other high touch surfaces on a regular basis.
- Social distancing markers will be placed on the ground where lines may form.
- Hand sanitizer stations will be available around the property.
- We will not accept cash transactions. We accept all major credit and debit cards. Apple Pay and Google Pay are also available at all of our touchless credit card machines. No signatures will be required.

We plan to have a ticket scanning system that will allow audience members to scan their own tickets for entry into the theater plaza. If this system is adopted, each ticket will contain a specified entry time frame and doorway to help with social distancing.

Finally, we encourage anyone who is feeling unwell not to attend a performance. If you have any COVID-19 symptoms, please call the Box Office prior to your performance to discuss your ticket options. We will work with patrons on a case-by-case basis to exchange or refund in order to limit possible exposure to COVID-19.

## OPENING NIGHTS SPONSOR



Four Seasons Resort  
Rancho Encantado Santa Fe  
A luxury resort getaway in the heart of New Mexico featuring Four Seasons service excellence.  
855-674-5401  
[fourseasons.com/santafe](https://fourseasons.com/santafe)

An Elevated Santa Fe Scene

## LEAD HOTEL PARTNER



Drury Plaza Hotel in Santa Fe  
Modern, spacious light-filled rooms in the heart of downtown Santa Fe.  
Special rates for opera season.  
800-378-7946  
[druryplazasantafe.com](https://druryplazasantafe.com)

TRAVEL happy.

## PREFERRED HOTEL PARTNER



Rosewood Inn of the Anasazi  
An intimate world-class retreat, reflecting a sophisticated aesthetic while still celebrating the Southwestern spirit.  
888-767-3966  
[rosewoodhotels.com/anasazi](https://rosewoodhotels.com/anasazi)



# Tickets 2021

## ORDER BY PHONE

800-280-4654 or 505-986-5900  
Monday – Friday, 9 am to 5 pm, MT

## ORDER ONLINE

at [santafeopera.org](http://santafeopera.org)

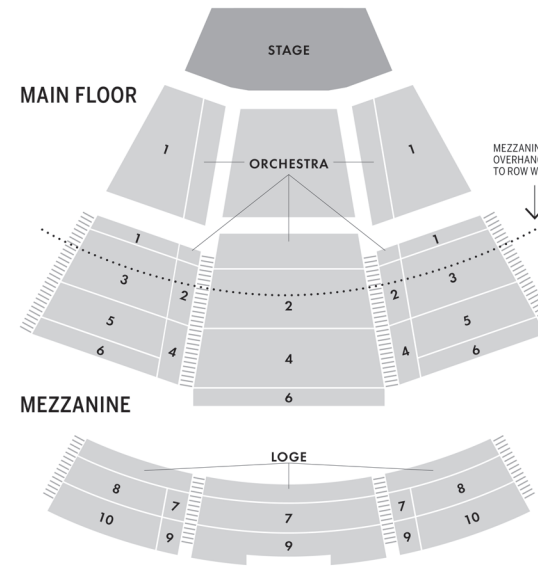
## TICKET PRICES

Individual tickets start at \$36  
Packages start at \$120

For current ticket prices, visit  
[santafeopera.org](http://santafeopera.org)

<b>BEST</b> Availability
<b>BETTER</b> Availability
<b>GOOD</b> Availability (most popular)

Sun	Mon	Tue	Wed	Thu	Fri	Sat
4 JULY	5	6	7	8	9	10 Figaro
11	12	13	14 Figaro	15	16	17 Lord of Cries
18	19	20	21 Lord of Cries	22	23 Figaro	24 Onegin
25	26	27	28 Onegin	29	30 Lord of Cries	31 Midsummer
1 AUGUST	2	3 Figaro	4 Midsummer	5 Lord of Cries	6 Onegin	7 Angel Blue
8	9	10 Figaro	11 Lord of Cries	12 Onegin	13 Midsummer	14 Figaro
15 Apprentice Scenes	16	17 Lord of Cries	18 Figaro	19 Midsummer	20 Onegin	21 Figaro
22 Apprentice Scenes	23	24 Figaro	25 Midsummer	26 Onegin	27 Figaro	28



## PERFORMANCE TIMES

8:30 pm July 10 - July 31  
8 pm August 3 – August 27

## 2021 CREATE YOUR OWN PACKAGE

In order to follow current and future health and safety protocols as mandated by our local government, we will be unable to offer our typical subscriptions. We are, however, able to offer our Create Your Own Package.

All orders are unseated until late spring, to afford us the greatest amount of flexibility and to provide the best seating, based on the recommended governmental guidelines at that time.

If you had a 2020 renewable seat subscription, please check your email or call the Box Office for a special offer.

## ADDITIONAL PERFORMANCES

**Apprentice Scenes** August 15 & 22

Upcoming artists and technicians take the mainstage spotlight for two special evenings of staged scenes from popular and unexpected works.

Adults: \$15 Youth (6 – 22): \$5

## COVID-19 SAFETY ACKNOWLEDGEMENT

While purchasing tickets for events held or sponsored by the Santa Fe Opera “social distancing” as mandated by our local government must be practiced and face coverings worn at all times to reduce the risks of exposure to COVID-19. Because COVID-19 is extremely contagious and is spread mainly by person-to-person contact, the Santa Fe Opera has put in place preventative measures to reduce its spread. However, we cannot guarantee that patrons, staff, or artists in attendance will not become infected with COVID-19.

## TICKETING INFORMATION

### Exchanges

Exchanges must occur no less than 48 hours in advance of the first affected performance. Seating is subject to availability. Create Your Own Packages and single tickets incur a \$10 per ticket exchange fee. A price increase may be incurred based upon performance date (no refunds for lower priced dates).

### Fees & Policies

The handling fee is \$4 per performance ticket for single ticket orders, \$10 per order for packages. A \$2 per ticket Coronavirus Sanitation Fee has been implemented to defray the costs of PPE and additional safety precautions for our patrons and staff.

No refunds or cancellations. Casts, repertory and ticket prices are subject to change. Children under six are not permitted in the theater.

Ticketing and Box Office Information can be found on our [website](http://www.santafeopera.org).

### If you have COVID-19 Symptoms

We encourage anyone who is feeling unwell not to attend a performance. If you have any COVID-19 symptoms, please call the Box Office prior to your performance to discuss your ticket options. We will work with patrons on a case-by-case basis to exchange or refund in order to limit possible exposure to COVID-19.

### Instant Translation Screens

As a complimentary service, the Electronic Libretto System offers instant translations in your choice of English or Spanish on a display screen in front of each seat. No refunds for malfunctions.

### Accessibility

The theater is ADA accessible. Please let the Box Office know your needs in advance. Hearing devices are complimentary and may be picked up at the Box Office. Large-print or Braille synopses are also available from our Box Office. All levels of the theater are accessible via elevator.