

For Immediate Release

THE
SANTA FE
OPERA



The Santa Fe Opera Reveals 2023 Season Poster featuring *Blackwater Draw II* by Jaune Quick-to-See Smith

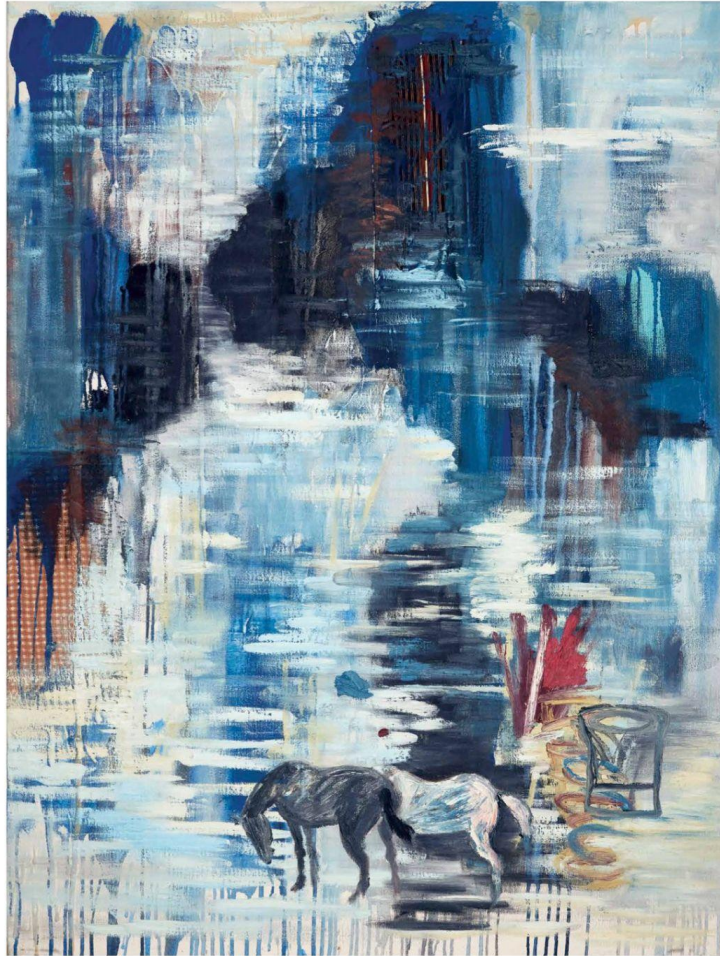
29 June 2023

Contact: Emily Doyle Moore | media@santafeopera.org | 505-986-5908

Santa Fe, NM — The Santa Fe Opera is honored to reveal its 2023 Season poster featuring *Blackwater Draw II* by Jaune Quick-to-See Smith, a groundbreaking and accomplished artist and Salish citizen of the Confederated Salish and Kootenai Nation in Montana. The painting is part of an 18-piece retrospective of the artist's work currently on display at the Whitney Museum of American Art. The exhibition, *Memory Map*, brings together nearly five decades of Smith's drawings, prints, paintings and sculptures in the largest and most comprehensive showing of her career to date. Writes Smith, "In my work, I use humor and satire to present narratives on the ethical treatment of animals, insects, humans, plants, water and our planet. My work is philosophically centered by my strong traditional Salish beliefs."

Beginning **June 30**, the 2023 Season poster will be on sale in person and online for \$35 at the [Opera Shop](#). The Opera Shop is open on performance evenings from 5:00 pm until 20 minutes after the end of each performance.

In addition to The Whitney Museum of American Art in New York, Smith's work is in the collections of the Cornell Fine Arts Museum, Rollins College, Winter Park, Florida; Museum of Modern Art, Quito, Ecuador; the Museum of Mankind, Vienna, Austria; The Walker Art Center, Minneapolis, Minnesota; The Smithsonian American Art Museum, Washington D.C.; the Museum of Modern Art, the Brooklyn Museum, and the Metropolitan Museum of Art. Smith has received numerous awards such as the Academy of Arts and Letters Purchase Award, New York, 1987; the Joan Mitchell Foundation Painters Grant, 1996; the Women's Caucus for the Arts Lifetime Achievement, 1997; the College Art Association Women's Award, 2002; Governor's Outstanding New Mexico Woman's Award, 2005; New Mexico Governor's Award for Excellence in the Arts, 2005. Art Table Artist Honoree, New York, 2011; Visionary Woman Award, Moore College, Pennsylvania, 2011; Elected to the National Academy of Art, New York, 2011; Living Artist of Distinction Award, Georgia O'Keeffe Museum, 2012; NAEA Ziegfeld Lecture Award, 2014; The Woodson Foundation Lifetime Achievement Award, 2015 along with four honorary doctorates: Minneapolis College of Art and Design, 1992; Pennsylvania Academy of Fine Arts, 1998; Massachusetts College of Art, 2003; and the University of New Mexico, Albuquerque 2009.



THE SANTA FE OPERA

2023 FESTIVAL SEASON

TOSCA · THE FLYING DUTCHMAN · PELLÉAS ET MÉLISANDE · RUSALKA · ORFEO

Jaune Quick-to-See Smith | Blackwater Draw II | Acrylic and fabric on canvas, 48" x 36" | The John and Susan Horseman Collection, Courtesy of the Horseman Foundation

Jaune Quick-to-See Smith, *Blackwater Draw II*. Acrylic and fabric on canvas, 48" x 36".

2023 Season Poster \$35.00, 22" x 30".

The John and Susan Horseman Collection, Courtesy of the Horseman Foundation.

The 2023 Season

Scheduled in the Santa Fe Opera's 66th Festival Season are 38 performances including two evenings of Apprentice Scenes. The company holds to its mission and time-tested programming model: a balanced and varied repertory of new, lesser-performed and standard works. Opening on **June 30** and **July 1** are two standard works, *Tosca* and *The Flying Dutchman*, followed by two lesser-performed works, *Pelléas et Mélisande* and *Rusalka*, on **July 15** and **July 22**. Rounding out the season and presented for the first time on **July 29** will be Monteverdi's seminal *Orfeo* with a world premiere orchestration by American composer **Nico Muhly**. Tickets are on sale now at santafeopera.org.

About The Santa Fe Opera

The Santa Fe Opera annually draws 85,000 people from New Mexico and around the globe. Nestled atop a mountain vista in northern New Mexico, the company's iconic **Crosby Theatre** is open on three sides, allowing visitors to enjoy performances complemented by the elements. Since 1957 the company has presented over 2,000 performances of 179 operas by 91 composers spanning five centuries of opera, creating a legacy of 45 American premieres and 18 world premieres. In November 2022, the company was recognized as "Festival of the Year" at the **International Opera Awards**.

Diversity, Equity, Inclusion and Accessibility at the Santa Fe Opera

Opera has the power to speak truth, broaden perspectives and invite empathy. The Santa Fe Opera is committed to the continuous work of becoming an antiracist and anti-oppressive organization and incorporating the principles of equity, diversity, inclusion and accessibility. Our goal is to create a joyful and engaging environment in which a diverse community of artists, staff, volunteers and audiences alike belong.

The mission of the Santa Fe Opera is to advance the operatic art form by presenting ensemble performances of the highest quality in a unique setting with a varied repertory of new, rarely performed, and standard works; to ensure the excellence of opera's future through apprentice programs for singers, technicians and arts administrators; and to foster an understanding and appreciation of opera among a diverse public.

Discover More: santafeopera.org

Connect: [Facebook](#) | [Instagram](#) | [Podcasts](#) | [TikTok](#) | [Twitter](#) | [YouTube](#)

###